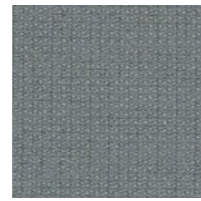


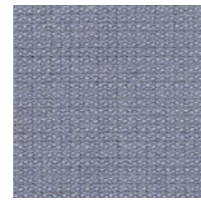
Cava 3  
124



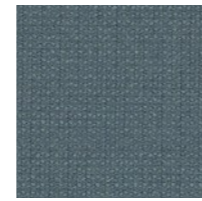
Cava 3  
132



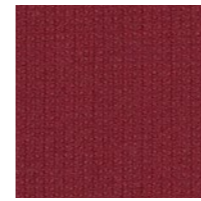
Cava 3  
142



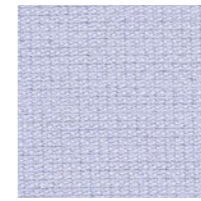
Cava 3  
153



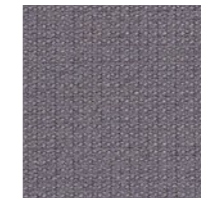
Cava 3  
162



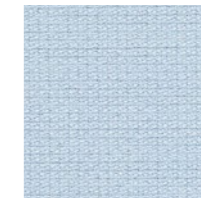
Cava 3  
662



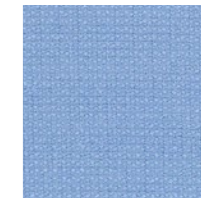
Cava 3  
673



Cava 3  
683



Cava 3  
722



Cava 3  
732



Cava 3  
184



Cava 3  
192



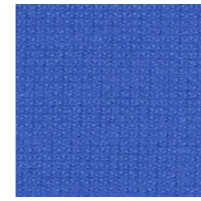
Cava 3  
212



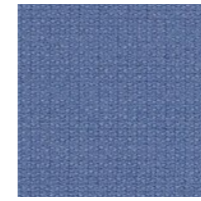
Cava 3  
223



Cava 3  
232



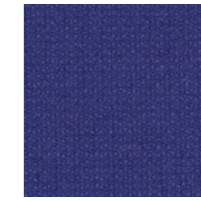
Cava 3  
742



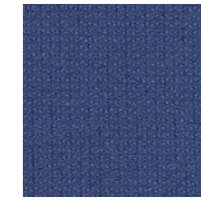
Cava 3  
752



Cava 3  
763



Cava 3  
772



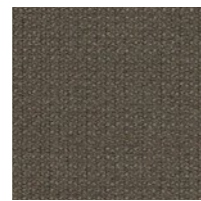
Cava 3  
782



Cava 3  
344



Cava 3  
364



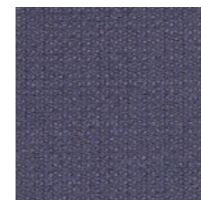
Cava 3  
373



Cava 3  
414



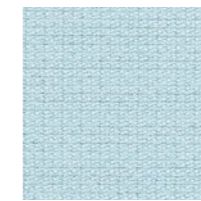
Cava 3  
422



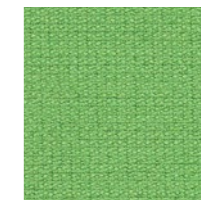
Cava 3  
793



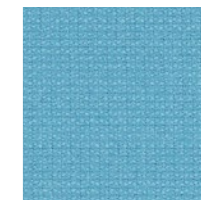
Cava 3  
794



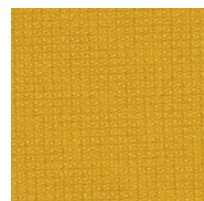
Cava 3  
833



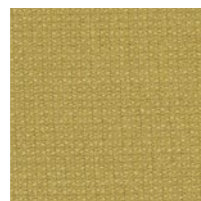
Cava 3  
843



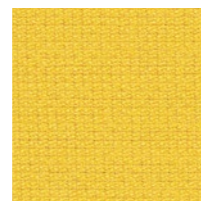
Cava 3  
852



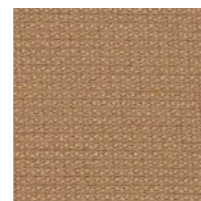
Cava 3  
432



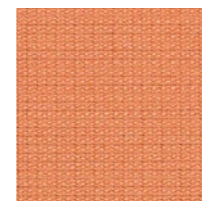
Cava 3  
442



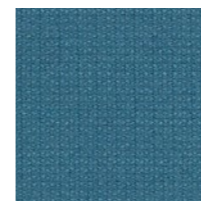
Cava 3  
453



Cava 3  
464



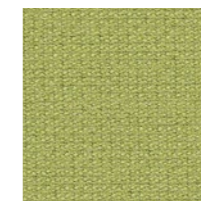
Cava 3  
543



Cava 3  
862



Cava 3  
872



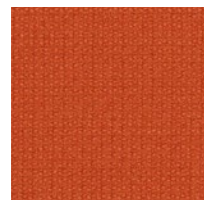
Cava 3  
883



Cava 3  
932



Cava 3  
953



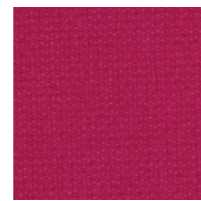
Cava 3  
552



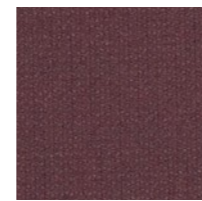
Cava 3  
563



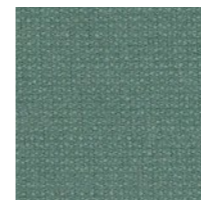
Cava 3  
633



Cava 3  
642



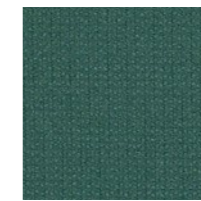
Cava 3  
652



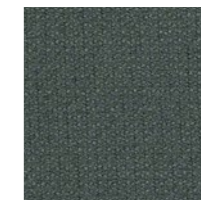
Cava 3  
962



Cava 3  
972



Cava 3  
982



Cava 3  
993

**construction**  
90% New Wool, 10% Nylon

Please note that photographic scans of textiles are not always colour accurate. Use the following swatch card to choose a textile for your upholstered item, however for an accurate representation of your textile selection, contact us for a sample of your chosen textile. For additional information, visit [www.kvadrat.dk](http://www.kvadrat.dk)